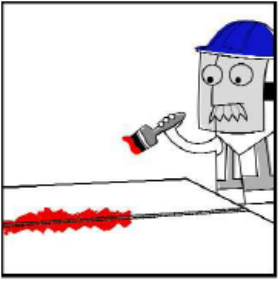
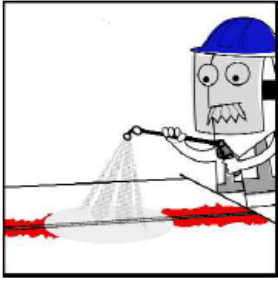


PRODUCT:	ENERJEX 130
APPLICATION:	200, 300 400 SERIES STAINLESS STEELS DUPEX STAINLESS STEELS NICKEL ALLOYS ALUMINIUM ALLOYS
	FOR SUITABILITY ON OTHER GRADES PLEASE CONSULT OUR SALES DESK.

<p>GENERAL:</p>  	<p>This product has all the main features of a standard Enerjex pickling paste in terms of feel, texture and performance.</p> <p>The Enerjex range of pickle pastes have a texture that is less viscous than other paste to allow for better penetration of the weld and HAZ, particularly in the “toes” of the weld. This feature results in a cleaner weld and rapid pickling times compared to other brands.</p> <p>The paste is dyed blue to help both identify its strength and also aid visibility when applying the paste so the operator knows where it has been applied for safety and quality purposes.</p> <p>Can be used for Pickling surfaces that have:</p> <ul style="list-style-type: none"> Rust contamination from tooling marks Rust contamination from grinding / plasma cutting operation Oxide / heat bloom removal following welding or heat treatment General pickling to brighten the surface of stainless steel.
---	---

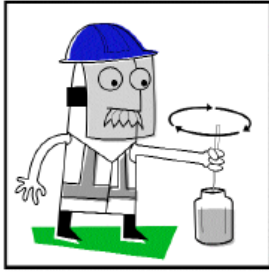
CHEMICAL PROPERTIES:	
Composition:	Nitric acid Hydrofluoric acid Binding agent
Form:	Paste
Density:	1.3 kg/l
pH:	0
Flash point:	-



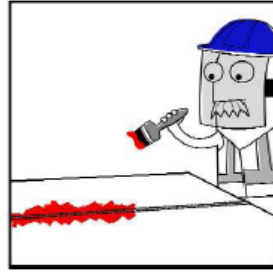
1STOPWELDINGSHOP.COM

AES
INDUSTRIAL SUPPLIES LTD

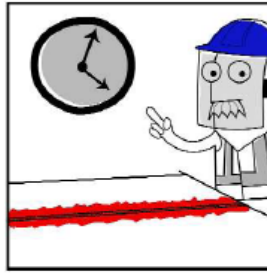
HOW TO USE:



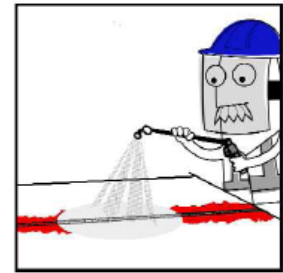
1) It is important to shake the pickling paste properly to ensure thorough mixing of the solution. Warning: Make sure the lid / cap is fastened tightly before shaking. Alternatively you can mix the paste with a plastic or wooden stirrer.



2) Apply the paste generously and evenly along the weld seam. The paste will spread approx. 50mm per/kg @ 50mm wide. The brush supplied is a plastic acid resistant material. Wash the brush after use for both safety reasons and to prolong its life.



3) The paste should be left on the surface in contact with the weld zone until all weld oxide / rust contamination is removed (pickled). The length of contact time is a function of time / temperature and grade of st/steel. There is little chance of over pickling since once the acid is spent it ceases to function.



4) It is important that the acid / pickled surface is removed by a firm mechanical action. Ideally a high pressure power washer is preferred. However, if not practical a scotch bright cloth dipped in water can be used to loosen the oxide scale and rinse the area. Thorough rinsing is vitally important to prevent stains. Consider passivation later. See Enerjex 600C4, 610 & 630 data sheets.

PACKAGING:

Enerjex 130 is supplied in 2kg (1.5lt) containers. Larger sizes on request. All containers are UN certified and carry correct labelling.

STORAGE:

Enerjex 130 should be stored indoors at room temperature. Containers must be kept in an upright position and the caps properly sealed and away from unauthorised persons.

SAFETY FIRST:

As always when using chemicals proper protective clothing should/must be worn; rubber boots, protective gloves, rubber apron and face visor. See Manufacturer's Safety Data (MSD) sheets.

ENVIRONMENT:

The waste produced after pickling needs to be collected and neutralised before entering the public sewage system. Stainless Restoration Ltd offer neutralising products to assist in this cause. Stainless Restoration Ltd will give advice FREE of any charge concerning disposal issue. See Manufacturer's Safety Data (MSD) sheets.

Information given in this leaflet may be subject to alteration without notice care has been taken to ensure that the contents of this publication are accurate but Stainless Restoration Ltd do not accept responsibility for error or for information which is found to be misleading. Suggestions for or descriptions of the end use or application of products or methods of working are for information only and the company accept no liability in respect thereof. Before using products supplied or manufactured by the company the customer should satisfy himself of their suitability. If further assistance is required, the company which has access to extensive research facilities, will often be willing to help.



1STOPWELDINGSHOP.COM



AES
INDUSTRIAL SUPPLIES LTD