

Dynasty® 210 Series

TIG/Stick Welding Power Source  

Quick Specs



Industrial Applications

Precision Fabrication
Heavy Fabrication
Pipe and Tube Fabrication
Aerospace
Aluminum Ship Repair
Anodized Aluminum Fabrication

Processes

AC/DC TIG (GTAW)
Pulsed TIG (GTAW-P)
Stick (SMAW)

Input Power 120–480 V, 1-Phase or 3-Phase Power

Amperage Range 1–210 A (DC)
2–210 A (AC)

Rated Output 210 A at 18 V, 60% Duty Cycle

Net Weight 47 lb. (21.3 kg)

Update and expand. Front panel memory card data port provides the ability to easily update software and expand product features. See memory cards on page 7. Visit MillerWelds.com/TIGSoftware for the latest software updates and expansions.

Pro-Set™ eliminates the guesswork when setting weld parameters. Use Pro-Set when you want the speed, convenience and confidence of preset controls. Simply select the feature and adjust until Pro-Set appears on the display.

Sleep timer conserves electricity. This programmable feature will power down the machine if it sits idle for a specified time.



Allows for any input voltage hookup (120–480 V) with no manual linking, providing convenience in any job setting. Ideal solution for dirty or unreliable power.

Cooler Power Supply (CPS) is an integrated 120-volt dedicated-use receptacle for the Coolmate™ 1.3. Available on select models, see page 6.

Cooler-On-Demand™ feature operates the auxiliary cooling system only when needed, reducing noise, energy use, and airborne contaminants pulled through the cooler. *Note: Cooler-On-Demand is only available on CPS models.*

Blue Lightning™ high-frequency (HF) arc starter for non-contact arc initiation. Provides more consistent arc starts and greater reliability compared to traditional HF arc starters.

New!



Dynasty 210

Dynasty 210 DX



Meter calibration allows digital meters to be calibrated for certification.

Wind Tunnel Technology™ protects internal electrical components from airborne contaminants, extending the product life.

Fan-On-Demand™ power source cooling system operates only when needed, reducing noise, energy use and the amount of contaminants pulled through the machine.



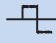
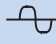
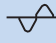

Power source is warranted for 3 years, parts and labor.

AC TIG Features

Balance control provides adjustable oxide removal which is essential for creating the highest quality aluminum welds. DX models provide extended ranges.

Frequency controls the width of the arc cone and can improve directional control of the arc.

AC Waveforms

-  **Advanced squarewave**, fast freezing puddle, deep penetration and fast travel speeds.
-  **Soft squarewave** for a soft buttery arc with maximum puddle control and good wetting action.
-  **Sine wave** for customers that like a traditional arc. Quiet with good wetting.
-  **Triangular wave** reduces the heat input and is good on thin aluminum. Fast travel speeds.

DC TIG Features

Exceptionally smooth and precise arc for welding exotic materials.

AC/DC Stick Features

DIG control allows the arc characteristics to be changed for specific applications and electrodes. Lower the DIG setting for smooth running electrodes like E7018 and increase the DIG setting for stiffer, more penetrating electrodes like E6010.

Hot Start™ adaptive control provides positive arc starts without sticking.

AC frequency control adds stability for smoother welds when AC Stick welding.

Stick-Stuck detects if the electrode is stuck to the part and turns the welding output off to safely and easily remove the electrode. Menu selectable.



Miller Electric Mfg. Co.
An ITW Welding Company
1635 West Spencer Street
P.O. Box 1079
Appleton, WI 54912-1079 USA

Equipment Sales US and Canada
Phone: 866-931-9730
FAX: 800-637-2315
International Phone: 920-735-4554
International FAX: 920-735-4125

MillerWelds.com
   



Specifications (Subject to change without notice.)



Welding Mode	Input Power	Welding Amperage Range	Rated Output	Phase	Amps Input at Rated Load Output, 50/60 Hz						Max. Open-Circuit Voltage	Dimensions	Net Weight
					120 V	208 V	240 V	400 V	480 V	KVA			
TIG (GTAW)	208–480 V	2–210 A (AC) 1–210 A (DC)	210 A at 18.4 V, 60% duty cycle	3-phase	—	16	14	9	7	6.0	5.8	80 VDC (11 VDC*) H: 13.6 in. (346 mm) W: 8.6 in. (219 mm) D: 22.5 in. (569 mm)	47 lb. (21.3 kg) 50 lb. (22.7 kg) with CPS
	120 V	2–210 A (AC) 1–210 A (DC)	125 A at 15 V, 60% duty cycle	1-phase	—	28	24	14	12	5.8	5.8		
Stick (SMAW)	208–480 V	5–210 A	160 A at 26.4 V, 60% duty cycle	3-phase	—	17	15	9	7	6.1	5.8		
	120 V	5–100 A	90 A at 23.6 V, 60% duty cycle	1-phase	—	29	25	15	12	6.0	6.0		

* Low OCV sense voltage for Stick and Lift-Arc™ TIG.

IP23 rating — This equipment is designed for outdoor use. It may be stored, but is not intended to be used outside during precipitation unless sheltered.

Operating temperature range is 14 to 104°F (-10 to 40°C). Storage temperature range is -22 to 149°F (-30 to 65°C). Portions of the preceding text are contained in EN 60974-1: "Welding power sources for arc welding equipment."

Certified by Canadian Standards Association to both the Canadian and U.S. Standards. All CE models conform to the applicable parts of the IEC 60974 series of standards.

Performance Data

Input Power	TIG (GTAW) Duty Cycle	Stick (SMAW) Duty Cycle	AC TIG Material Thickness Range	DC TIG Material Thickness Range	Stick Electrode Maximum Diameter	Generator Requirement
208–480 V	210 A, 60% 175 A, 100%	210 A, 30% 160 A, 60% 125 A, 100%	0.012–1/4 in. (0.3–6.4 mm)	0.002–1/4 in. (0.05–6.4 mm)	6010: 3/16 in. (4.8 mm) 7018: 5/32 in. (4.0 mm) 7024: 5/32 in. (4.0 mm)	9 kW
120 V	150 A, 40% 125 A, 60% 100 A, 100%	100 A, 40% 90 A, 60% 75 A, 100%				

Coolmate™ 1.3 Cooler



- Dynasty® models with CPS turn Coolmate 1.3 on and off
- Power indicator light
- Fluid level sight window
- Rustproof polyethylene-molded coolant tank and filler spout
- 1/4-HP motor is thermally protected to guard against overheating
- Efficient fin and tube heat exchanger
- Factory-set pressure relief valve (55 PSI) maintains consistent pressure during operation
- Filter and coolant filling spout are conveniently located
- Brass-body, positive displacement rotary vane pump provides consistent coolant flow and pressure rating with long pump-life expectancy

Input Power	Maximum Current Draw	Maximum Cooling Capacity	Rated Cooling Capacity	Tank Capacity	Dimensions	Net Weight
115 VAC, 60 Hz	4.7 A (60 Hz)	3400 W (11,600 BTU/hr.) 3.8 qt./min. (1.7 L/min.)	1330 W (4540 BTU/hr.) 1.1 qt./min. (1 L/min.)	1.3 gal. (4.9 L)	H: 11.25 in. (286 mm) W: 10.375 in. (264 mm) D: 24 in. (610 mm)	43 lb. (20 kg)

Weldcraft™ W-250 (WP-20) TIG Torch



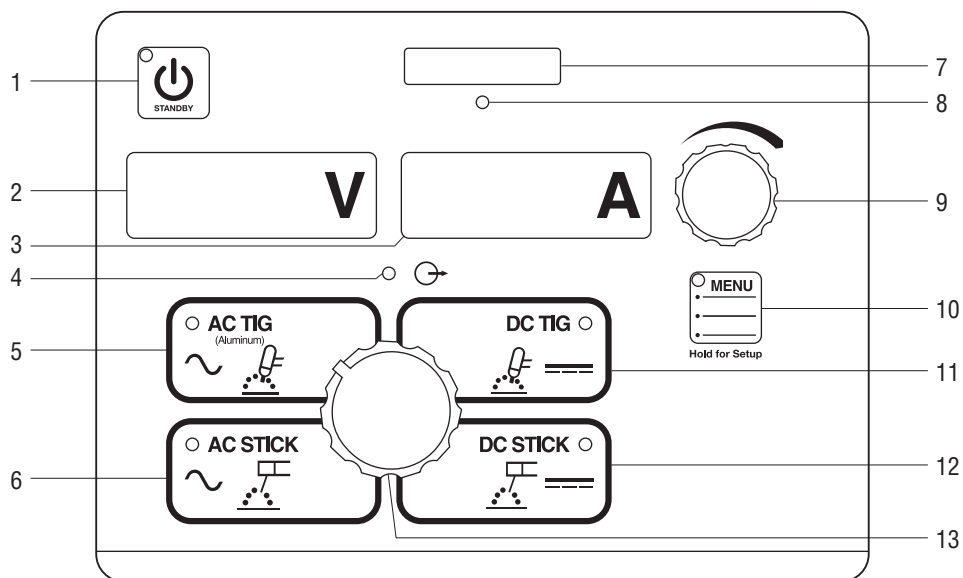
- Efficient around-the-head cooling design extends torch life and minimizes downtime due to overheating
- Lightweight, compact body design for increased comfort and control

Cooling Method	AC Rating	DC Rating	Consumables	Electrode Range
Water-cooled	180 A, 100% duty cycle	250 A, 100% duty cycle	13N	.020–1/8 in. (0.5–3.2 mm)

TIG Upgrade Chart

Why Upgrade?	Syncrowave 210	UPGRADE	Dynasty 210	UPGRADE	Dynasty 210 DX	Dynasty 210 Benefits
Maximum Thickness Capacity	1/4-in. Aluminum		1/4-in. Aluminum			Same material thickness capacity.
Pulse Control	Off–50 PPS (Expandable Off–150)	➔	Off–250 PPS	➔	Off–500 PPS	Provides more arc stability.
AC Frequency Control (Aluminum TIG)	Fixed at 100 Hz (Expandable 60–150 Hz)	➔	Variable 70–150 Hz	➔	Variable 20–400 Hz	Higher frequencies provide better arc control and faster travel speeds.
AC Balance Control (Aluminum TIG)	60–80%		60–80%	➔	50–99%	Extended Balance control provides more versatility on specialty materials.
AC Waveforms (Aluminum TIG)	Soft Squarewave	➔	Soft Squarewave	➔	Advanced Squarewave Soft Squarewave Sine Wave Triangular Wave	Advanced Squarewave = Travel faster Soft Squarewave = Maximum puddle control Sine Wave = Traditional characteristics Triangular Wave = Reduced heat input
Portability	133.5 lb. (61 kg)	➔			47 lb. (21.3 kg) Carry or Cart	Reduced size and weight provides improved mobility/portability.
Power Flexibility	Auto-Line™ 120–240 V 1-Phase Only	➔			Auto-Line™ 120–480 V 1-Phase or 3-Phase	Auto-Line™ allows the unit to operate on any voltage. 1-phase or 3-phase. Even generators!

Dynasty® 210 Control Panel



1. Standby Switch

2. Voltmeter Display

3. Ammeter Display

4. Output Contactor "On" Indicator

5. AC TIG Process Menu Parameters

Amperage	2–210 A**
Balance*	60–80%
Frequency*	70–150 Hz
Postflow	Auto/Off–50 seconds

6. AC Stick Process Menu Parameters

Amperage	5–210 A
DIG*	Off–100%

7. Memory Card Port

8. Activity Indicator

9. Encoder Control

10. Menu Button

11. DC TIG Process Menu Parameters

Amperage	1–210 A**
Pulse*	Off–250 PPS
Postflow	Auto/Off–50 seconds

12. DC Stick Process Menu Parameters

Amperage	5–210 A
DIG*	Off–100%

13. Process Selector

*Pro-Set parameter selectable. **Amperage range is tungsten size dependent.

User Menu (Hold Menu button three seconds.)

AC TIG

1. Start = HF/Lift Arc
2. Tungsten Size = .020–1/8 in. or .05–3.2 mm
3. Remote Trigger = STD/HOLD/OUTPUT ON

AC Stick

1. Hot Start = ON/OFF
2. Remote Trigger = OUTPUT ON/STD

DC TIG

1. Start = Lift Arc/HF
2. Tungsten Size = .020–1/8 in. or .05–3.2 mm
3. Remote Trigger = STD/HOLD/OUTPUT ON

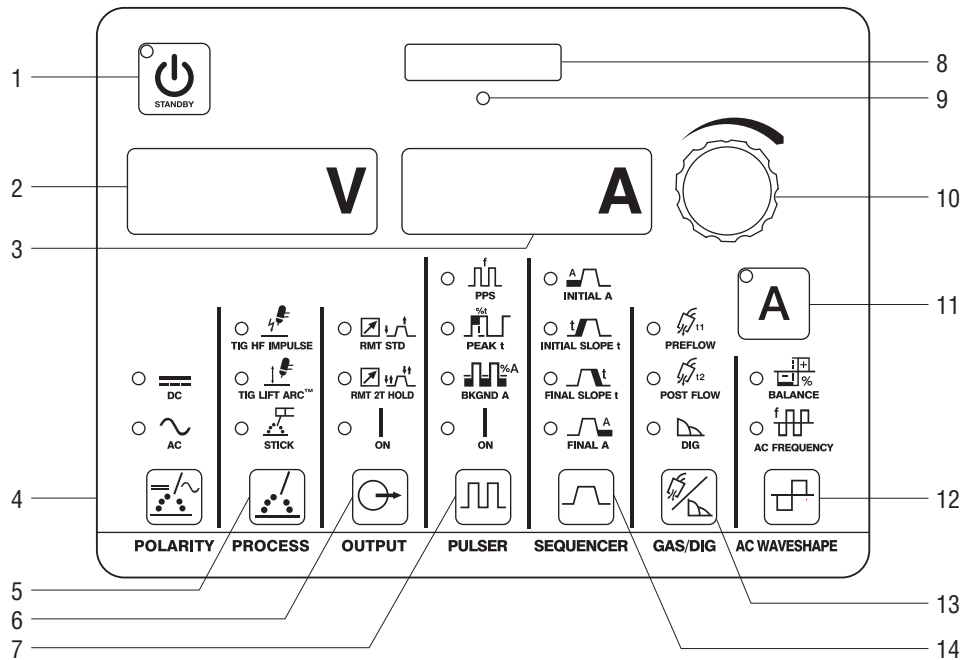
DC Stick

1. Hot Start = ON/OFF
2. Remote Trigger = OUTPUT ON/STD

Tech Menu (Hold Menu button five seconds.)

1. Arc Time
 - 0.0–9999 hours
 - 0.0–59 minutes
 - 0–999,999 cycles
 - Resettable
2. Error Log = Error event recorder
3. Sleep Timer = 1/5/10/15/30/45MIN/1HR
4. Stick Stuc = OFF/ON
5. OCV = LOW/NORM
6. Cooler Power = AUTO/OFF (only on Dynasty models with CPS)
7. Machine Reset
8. Software Number
9. Serial Number

Dynasty® 210 DX Control Panel



- | | | | |
|-------------------------------------|--------------------------------------------------------|------------------------------|--------------------------------|
| 1. Standby Switch | | 11. Amperage Button | |
| 2. Voltmeter Display | | TIG AC | 2–210 A** |
| 3. Ammeter Display | | TIG DC | 1–210 A** |
| 4. Polarity | AC/DC | Stick | 5–210 A |
| 5. Process/
Arc Starting | TIG: HF Impulse, Lift-Arc
STICK: Adaptive Hot Start | 12. AC Waveshape | |
| 6. Output Control | Standard Remote,
2T Trigger Hold,
Output ON | Balance* | Ball (30%), 50–99% EN |
| 7. Pulser Control | | Frequency* | 20–400 Hz |
| Pulses per Second* | DC: 0.1–500 PPS
AC: 0.1–500 PPS | 13. Gas/DIG | |
| Peak Time* | 5–95% | Preflow | 0.0–25.0 seconds |
| Background Amps* | 5–95% | Postflow | Auto/Off–50 seconds |
| 8. Memory Card Port | | DIG* | Off–100% |
| 9. Activity Indicator | | 14. Sequencer Control | |
| 10. Encoder Control | | Initial Amps | AC: 2–210 A**
DC: 1–210 A** |
| | | Initial Slope | 0.0–25.0 seconds |
| | | Weld Time | 0.0–999 seconds |
| | | Final Slope | 0.0–25.0 seconds |
| | | Final Amps | AC: 2–210 A**
DC: 1–210 A** |

*Pro-Set parameter selectable. **Amperage range is tungsten size dependent.

User Menu (Press Gas and Amperage buttons.)

1. Tungsten Size = .020–1/8 in./GEN or .05–3.2 mm
2. Remote Trigger = 2T/3T/4T/4TL/4TLE
3. Wave Form = SOFT/ADVS/SINE/TRI
4. Stick Hot Start = ON/OFF

Tech Menu (Hold Gas and Amperage buttons three seconds.)

1. Arc Time 0.0–9999 hours
0.0–59 minutes
0–999,999 cycles
Resettable
2. Error Log = Error event recorder
3. Sleep Timer = 1/5/10/15/30/45MIN/1HR
4. Stick Stuc = OFF/ON
5. OCV = LOW/NORM
6. Cooler Power = AUTO/OFF (only on models with CPS)
7. Weld Timers = OFF/ON
8. Locks = OFF/1–4
9. External Pulse Control = OFF/ON
10. Machine Reset
11. Software Number
12. Serial Number

Dynasty® 210 Models/Packages

Build an Air-Cooled Package

Select desired stock number for each step.



#907 685
Dynasty shown.



#301 311
kit shown.

Step #1 • Select Dynasty		Step #2 • Select Contractor Kit
Dynasty 210	#907 685	Foot Control Contractor Kit #301 309 Fingertip Control Contractor Kit #301 311
Dynasty 210 (CPS)	#907 685 002	
Dynasty 210 DX	#907 686	
Dynasty 210 DX (CPS)	#907 686 002	
<i>Note: For models without the Cooler Power Supply (CPS), the Coolmate 1.3 must be powered through an external 120-volt facility power.</i>		
Dynasty comes with adjustable shoulder strap, 8-ft. power cord (no plug), quick reference guide and two 50-mm Dinse-style connectors.		See page 7 for kit contents.

Build a Water-Cooled Package

Select desired stock number for each step.



#907 685 001
Dynasty 210
TIGRunner® shown
with four bottles
of #043 810
Low-Conductivity
Coolant.



#300 429 remote shown.



#300 185 kit shown.

Step #1 • Select Dynasty TIGRunner® and Coolant	Step #2 • Select Remote Control	Step #3 • Select Torch Kit
Dynasty 210 (CPS) TIGRunner	#907 685 001	W-250 (WP-20) Kit #300 185 (recommended) W-280 (WP-280) Kit #300 990
Dynasty 210 DX (CPS) TIGRunner	#907 686 001	
&		
Low-Conductivity Coolant	#043 810	
(Must be ordered in quantities of four.)		
	Wireless Foot (recommended) #300 429 RFCS-14 HD Foot #194 744 RCC-14 E/W Fingertip #151 086 RCCS-14 N/S Fingertip #043 688 RMS-14 Pushbutton #187 208 RMLS-14 Momentary/Maintained #129 337 RHC-14 Hand #242 211 020 Wireless Hand #300 430	
Dynasty TIGRunner comes with 8-ft. power cord (no plug), quick reference guide, Coolmate™ 1.3 and Small Runner™ cart.	See page 7 for remote descriptions.	See page 7 for kit contents.

Preconfigured Water-Cooled Packages

Use a single stock number to order a complete preconfigured system.



#951 669
package shown.

Select Water-Cooled Complete Package

Dynasty 210 (CPS) Complete with Foot Control	#951 666
Dynasty 210 (CPS) Complete with Wireless Foot Control	#951 667
Dynasty 210 DX (CPS) Complete with Foot Control	#951 668
Dynasty 210 DX (CPS) Complete with Wireless Foot Control	#951 669

Comes with:

- 8-ft. power cord (no plug)
- Quick reference guide
- Coolmate™ 1.3 #300 972
- Coolant (4 one-gallon bottles of #043 810)
- Small Runner™ cart #301 318
- Remote control #194 744 (foot) or remote control #300 429 (wireless foot)
- W-250 (WP-20) torch kit #300 185 (see page 7 for contents)

Genuine Miller® Accessories



2-Wheel Trolley Cart #300 971

Easy-to-manuever two-wheel cart features single-cylinder rack, chain for cylinder, cable holders, torch holder, storage area, and filler rod storage area. Works with Dynasty/Maxstar 210 and 280 with Coolmate 1.3 cooler. Straps also included for mounting Dynasty®/Maxstar® 200 with Coolmate 1 cooler.



Small Runner™ Cart #301 318

Designed for Dynasty/Maxstar 210 and 280 with Coolmate 1.3 cooler. Cart features single-cylinder rack, foot pedal holder, two cable/torch holders, and two TIG filler rod holders.



Coolmate™ 1.3 #300 972

120 VAC 1.3-gallon cooler designed to cool torches up to 280 amps.



Performance TIG Gloves

#263 345 X-Small (Women's)
#263 346 Small (Women's)
#263 347 Medium
#263 348 Large
#263 349 X-Large
Completely unlined, goat grain leather with triple-padded palm.

Memory Cards

Memory Card Expansion

#301 235 Independent AC Expansion
Allows EP and EN amperages and waveforms to be set independently to precisely control heat input to the work and electrode.

#301 151 14-Pin Automation Expansion
Provides the ability to access common automation functions through the 14-pin connection.

#301 152 14-Pin Modbus® Expansion
Provides the ability to access basic and advanced functions through the 14-pin connection.

Memory Card (Blank) #301 080

A blank, commercially available memory card used for transferring software updates and expandable features from your computer to the machine.

TIG Torches, Kits and Connectors

Contractor Kits

#301 309 150 A RFCS-14 HD Foot Pedal Kit
#301 311 150 A RCCS-14 Fingertip Kit
All-in-one TIG/Stick welding kit comes with either a RFCS-14 HD foot control or RCCS-14 fingertip control, Weldcraft™ A-150 TIG torch, 200-amp Stick electrode holder and 300-amp work clamp with 15-foot (4.6 m) cables, flow gauge regulator with 12-foot (3.7 m) gas hose, gas hose coupler, AK2C torch accessory kit and TIG torch connector.



Weldcraft™ A-150 (WP-17) TIG Torch

#WP-17-12-R (12 ft.)
#WP-17-25-R (25 ft.)
150-amp air-cooled torch. Torch body gas valve models are available.

Note: A-150 (WP-17) torches require #195 378 connector.

Air-Cooled TIG Torch Connectors

#195 378* All air-cooled torches (except A-200)
#195 379 A-200 (WP-26)
50-mm Dinse-style for one-piece air-cooled torch.
*A-80 (WP-24) torches require 24-5 connector.

Water-Cooled Torch Kits

#300 185 W-250 (WP-20) (recommended)
#300 990 W-280 (WP-280)
Kit comes with Weldcraft™ 25-foot (7.6 m) TIG torch with Dinse-style connector, torch cable cover, work clamp with 15-foot (4.6 m) cable, flowmeter regulator with gas hose and torch accessory kit (1/16-, 3/32- and 1/8-inch 2% ceriated tungsten, nozzles, collets and collet bodies).



Weldcraft™ W-225 Modular (WP-225) TIG Torch

#WP-225-12-R (12 ft.)
#WP-225-25-R (25 ft.)
225-amp water-cooled torch. Includes 1726 and 9-70 torch heads.

Note: W-225 Modular (WP-225) torch requires #195 377 connector.

Water-Cooled TIG Torch Connector #195 377

50-mm Dinse-style with water return line. For use with all Weldcraft™ water-cooled torches.

Remote Controls and Switches

Wireless Remote Foot Control #300 429

For remote current and contactor control. Receiver plugs directly into the 14-pin receptacle of Miller machine. 90-foot (27.4 m) operating range.

RFCS-14 HD Foot Control #194 744

Maximum flexibility is accomplished with a reconfigurable cord that can exit the front, back or either side of the pedal. Foot pedal provides remote current and contactor control. Includes 20-foot (6 m) cord and 14-pin plug.

RCC-14 Remote Contactor and Current Control #151 086

East/west rotary-motion fingertip control attaches to TIG torch using two hook-and-loop fasteners. Includes 26.5-foot (8 m) cord and 14-pin plug.

RCCS-14 Remote Contactor and Current Control #043 688

North/south rotary-motion fingertip control attaches to TIG torch using two hook-and-loop fasteners. Includes 26.5-foot (8 m) cord and 14-pin plug.

RMS-14 On/Off Control #187 208

Momentary-contact switch for contactor control. Rubber-covered pushbutton dome switch ideal for repetitive on-off applications. Includes 26.5-foot (8 m) cord and 14-pin plug.

RMLS-14 Switch #129 337

Momentary- and maintained-contact rocker switch for contactor control. Push forward for maintained contact and backward for momentary contact. Includes 26.5-foot (8 m) cord and 14-pin plug.

RHC-14 Hand Control #242 211 020

Miniature hand control for remote current and contactor control. Dimensions: 4 x 4 x 3.25 inches (102 x 102 x 83 mm). Includes 20-foot (6 m) cord and 14-pin plug.



Wireless Remote Hand Control #300 430

For remote current and contactor control. Receiver plugs directly into the 14-pin receptacle of Miller machine. 300-foot (91.4 m) operating range.

Educational Materials

To order, please call Miller Literature at 866-931-9732 or visit MillerWelds.com/resources/tools.

Gas Tungsten Arc Welding (TIG) Publication #250 833

Setup DVD #251 116

Video topics include tungsten selection, setup menus, DC pulse, sequencer, balance and frequency settings.

Tungsten

Tungsten	Amp Range	2% Ceriated (AC/DC)	2% Lanthanated (AC/DC)
1/16 in. (1.6 mm)	70–150 A	WC116X7	WL2116X7
3/32 in. (2.4 mm)	140–250 A	WC332X7	WL2332X7
1/8 in. (3.2 mm)	225–400 A	WC018X7	WL2018X7
5/32 in. (4.0 mm)	300–500 A	WC532X7	WL2532X7

Ordering Information

Equipment and Options	Stock No.	Description	Qty.	Price
Dynasty® 210	#907 685	Auto-Line™ 120–480 VAC, 50/60 Hz, CSA . 8-ft. power cord		
Dynasty® 210 (CPS)	#907 685 002	Auto-Line™ 120–480 VAC, 50/60 Hz, CSA . 8-ft. power cord		
Dynasty® 210 DX	#907 686	Auto-Line™ 120–480 VAC, 50/60 Hz, CSA . 8-ft. power cord		
Dynasty® 210 DX (CPS)	#907 686 002	Auto-Line™ 120–480 VAC, 50/60 Hz, CSA . 8-ft. power cord		
Water-Cooled Packages				
Dynasty® 210 (CPS) TIGRunner®	#907 685 001	Auto-Line™ 120–480 VAC, 50/60 Hz, CSA . 8-ft. power cord (Torch kit, accessories and coolant sold separately)		
Dynasty® 210 DX (CPS) TIGRunner®	#907 686 001	Auto-Line™ 120–480 VAC, 50/60 Hz, CSA . 8-ft. power cord (Torch kit, accessories and coolant sold separately)		
Dynasty® 210 (CPS) Complete w/Foot Control	#951 666	Auto-Line™ 120–480 VAC, 50/60 Hz, CSA . 8-ft. power cord		
Dynasty® 210 (CPS) Complete with Wireless Foot Control	#951 667	Auto-Line™ 120–480 VAC, 50/60 Hz, CSA . 8-ft. power cord		
Dynasty® 210 DX (CPS) Complete w/Foot Control	#951 668	Auto-Line™ 120–480 VAC, 50/60 Hz, CSA . 8-ft. power cord		
Dynasty® 210 DX (CPS) Complete with Wireless Foot Control	#951 669	Auto-Line™ 120–480 VAC, 50/60 Hz, CSA . 8-ft. power cord		
Accessories				
2-Wheel Trolley Cart	#300 971	See page 7		
Small Runner™ Cart	#301 318	See page 7		
Coolmate™ 1.3	#300 972	120 VAC, 60 Hz, CSA . <i>Requires coolant</i>		
TIG Coolant (Must be ordered in quantities of four)	#043 810	1-gallon plastic bottle. Protects against freezing to -37° Fahrenheit (-38° C) or boiling to 227° Fahrenheit (108° C)		
TIG Gloves		See page 7		
Memory Cards		See page 7		
TIG Torches, Kits and Connectors				
Air-Cooled Contractor Kits	#301 309 #301 311	Foot pedal Fingertip		
Weldcraft™ A-150 (WP-17) TIG Torch	#WP-17-12-R #WP-17-25-R	12-ft. (3.7 m) cable. Requires #195 378 connector 25-ft. (7.6 m) cable. Requires #195 378 connector		
Weldcraft™ A-200 (WP-26) TIG Torch	#WP-26-12-R #WP-26-25-R	12-ft. (3.7 m) cable. Requires #195 379 connector 25-ft. (7.6 m) cable. Requires #195 379 connector		
Air-Cooled TIG Torch Connectors	#195 378 #195 379	Connects all air-cooled Weldcraft™ torches (except A-200) to Dinse-style connector. A-80 (WP-24) torches require 24-5 connector Connects Weldcraft™ A-200 (WP-26) torch to Dinse-style connector		
Water-Cooled Torch Kits	#300 185 #300 990	W-250 (WP-20) (Recommended for Dynasty 210) W-280 (WP-280)		
Weldcraft™ W-225 Modular (WP-225) TIG Torch	#WP-225-12-R #WP-225-25-R	12-ft. (3.7 m) cable. Requires #195 377 connector 25-ft. (7.6 m) cable. Requires #195 377 connector		
Water-Cooled TIG Torch Connector	#195 377	Connects Weldcraft™ water-cooled torches to Dinse-style connector		
Tungsten		See page 7		
Remote Controls				
Wireless Remote Foot Control	#300 429	Foot control with wireless 90-ft. (27.4 m) operating range		
RFCS-14 HD	#194 744	Heavy-duty foot control		
RCC-14	#151 086	Side-to-side (east/west) fingertip control		
RCCS-14	#043 688	North/south fingertip control		
RMS-14	#187 208	Momentary rubber dome switch		
RMLS-14	#129 337	Momentary/maintained rocker switch		
RHC-14	#242 211 020	Hand control		
Wireless Remote Hand Control	#300 430	Hand control with wireless 300-ft. (91.4 m) operating range		
Educational Materials				
Gas Tungsten Arc Welding (TIG) Publication	#250 833			
Setup DVD	#251 116			

Date:

Total Quoted Price:

Distributed by:

