

# G40, G50, G40 Air & G50 Air

## A flip front welding and grinding helmet



G40 & G50 is a combined welding and grinding helmet of which the G40 houses a passive mineral glass and the G50 houses an ADF Automatic Darkening Filter, shade levels DIN 9-13, and with flip-up visor. The large plastic lens gives the welder an unobstructed field of view when the visor is flipped up. The helmets are rated B in the impact resistance classification, which means they are approved for grinding.

- Lightweight shell
- Automatic / fix shade options
- Large inner grinding visor (clear)
- Comfort headgear
- Respiratory option with ESAB PAPR

Visit [esab.com](http://esab.com) for more information.

### Process

- SMAW/MMA (Stick)
- GMAW (MIG/MAG)
- GTAW (TIG)
- Grinding
- Oxy Fuel Cutting
- Plasma Cutting
- PAW - Plasma Arc Welding



*G50 Air with ESAB PAPR*

## Specifications

Model	G40	G50
Viewing Area	60 x 110 / 90 x 110 mm	97 x 47 mm
Lens Shade	DIN 10	9-13 Automatic
Power Supply	-	Solar cell, no battery change
Standards	EN12941 Class TH3 P R SL	EN12941 Class TH3 P R SL
Classification	-	1/1/1/2
Weight Standard Helmet	700 g	730 g
Weight Air Version Helmet	870 g	890 g

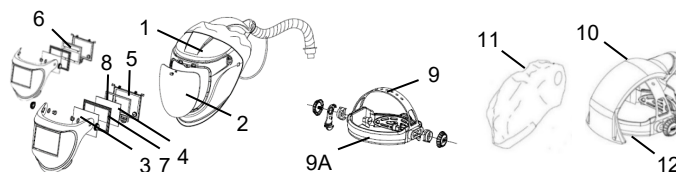
## Ordering Information

G40 60 x 110	0700000436
G40 90 x 110	0700000437
G50 9-13	0700000438
G40 Air 60 x 110 Prepared for fresh air (incl. air duct and face seal)	0700000439
G40 Air 90 x 110 Prepared for fresh air (incl. air duct and face seal)	0700000440
G50 Air 9-13 Prepared for fresh air (incl. air duct and face seal)	0700000441
PAPR with Standard Hose 850 mm (33.5 in)	0700002300
PAPR with Long Hose 1000 mm (39.4 in)	0700002301

## Wear and Spare Parts

1. Main Shell G30, G40 & G50	0700000515
2. Large inner Visor G30, G40 & G50 - Clear	0700000501
3. Front Cover Lens G40 & G50	0700000517
4. Filter Lens 60 x 110 Shade 10 Pk 25	0160292002
4. Filter Lens 90 x 110 Shade 10 Pk 25	0760031632
5. Lens Retainer G40 & G50	0700000518
6. G50 ADF	0700000523
7. Cradle G40 90 x 110 & G50	0700000519
7. Cradle G40 60 x 110	0700000520
8. Gasket for Mineral Glass G40 60 x 110 & 90 x 110	0700000521
9. Head gear	0700000415
9A. Sweat band	0700000414
10. Headgear including air duct	0700000420
11. Head & Face Seal for G30, G40 & G50	0700000512
Kit Bag (empty)	0700002315
G40/G50 Helmet Flip without ADF	0700002190
G40/G50 Front Flip Adjustment Knob Black	0700002191
G40/G50 Headgear Adjustment Knob Set Yellow	0700002192

For additional information on PAPR units please see separate fact sheet.



ESAB / esab.com

